



# MWX45

## MTX wall panel controller 45 x 45 mm

### Highlights:

- Terminal block connection
- Integration with 45 x 45 mm installation materials
- Led display
- Program selection and volume control

The MWX45 are wall panel controllers to be used in combination with the AUDAC MTX series multi-zone audio matrix systems and the AUDAC AMP523MK2 & RM523. It provides the possibility to select the desired audio source and control the volume for one zone. The 7 segment LED display indicates the current selected audio source (1-8) or volume. The connection between the wall panel and the matrix system is achieved by using standard CAT5 UTP cable which should be connected to the terminal block connector on the back side of the wall panel. The wall panels are available in 45 mm, this version is compatible with AUDAC, Niko, Legrand and other standard 45 x 45 mm installation materials. Thanks to its slim and good looking design, these wall panel controllers will blend into all kinds of different environments or interiors. Available in black (/B) and white (/W). There are two different AUDAC cover frames with metal subframe available, for 1 or 2 units, which are also available in black (/B) or white (/W).



### Applications:

- Bars, restaurants
- Retail
- Hotels
- Corporate spaces
- Residential

### System specifications:

|            |             |                           |
|------------|-------------|---------------------------|
| Control    |             | RS-485                    |
| Cabling    |             | CAT5 (up to 500 meter)    |
| Power      | Consumption | 0.35 W - 14 mA / 24 V     |
| Connectors |             | 4-pin Euro Terminal Block |

## Product Features:

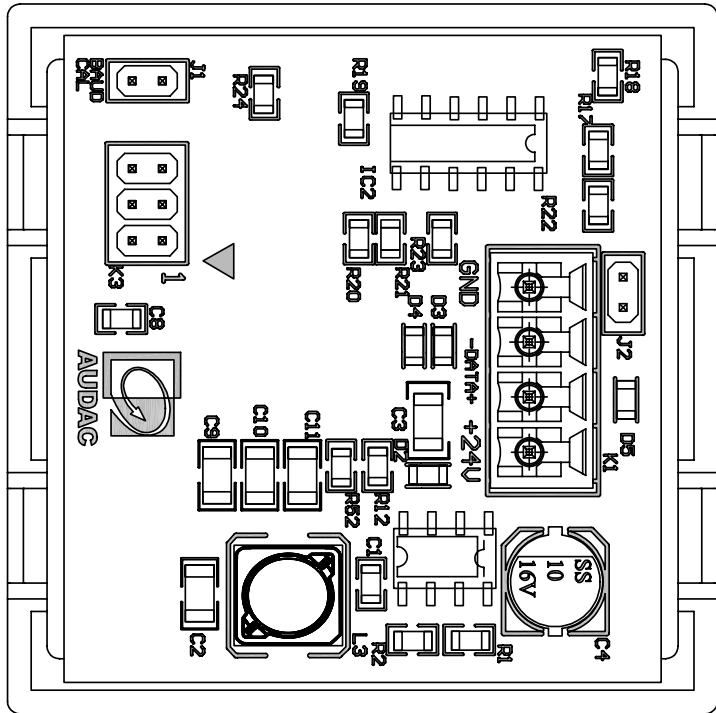
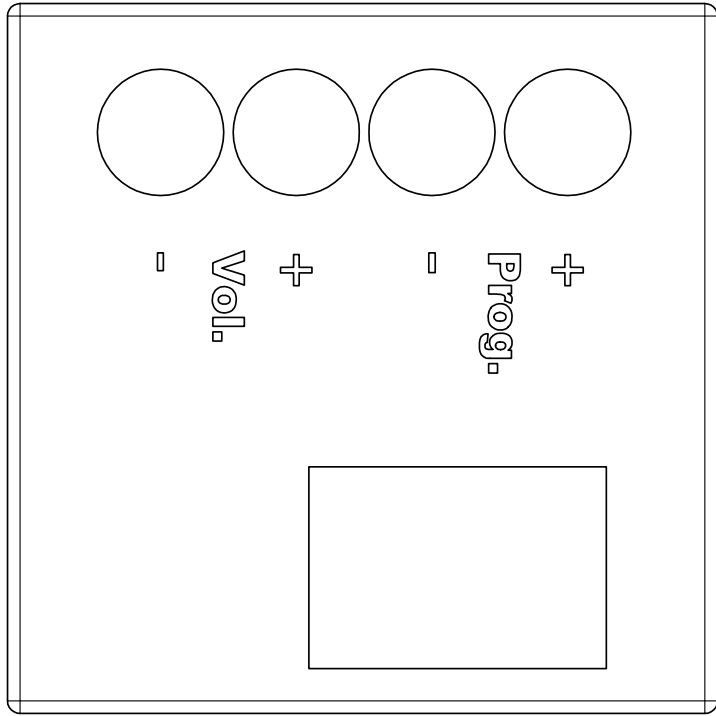
---

|              |          |  |
|--------------|----------|--|
| Dimensions   |          | 45 x 45 x 33 mm (W x H x D)                            |
| Weight       |          | 0.028 kg   |
| Construction |          | ABS  |
| Finish       |          | Soft-touch painting                                    |
| Mounting     |          | 45 x 45 mm (Audac / Niko / Legrand)                    |
| Colours      |          | Black (RAL9005) (MWX45/B)<br>White (RAL9010) (MWX45/W) |
| Accessories  | Optional | CP45CF1 Cover frame<br>CP45CF2 Cover frame             |

## Variants:

---

- MWX45/B - Black version
- MWX45/W - White version



|                                |  |                                    |
|--------------------------------|--|------------------------------------|
| <p><b>MWX45</b></p>            | <p><b>Product description:</b><br/>MTX WALL PANEL CONTROLLER - 45x45</p> | <p><b>Unit height:</b><br/>N/A</p> |
| <p><b>Weight:</b><br/>28 g</p> | <p><b>Outer dimensions:</b><br/>(w x h x d)<br/>45 x 45 x 33</p>         | <p><b>Unit height:</b><br/>N/A</p> |