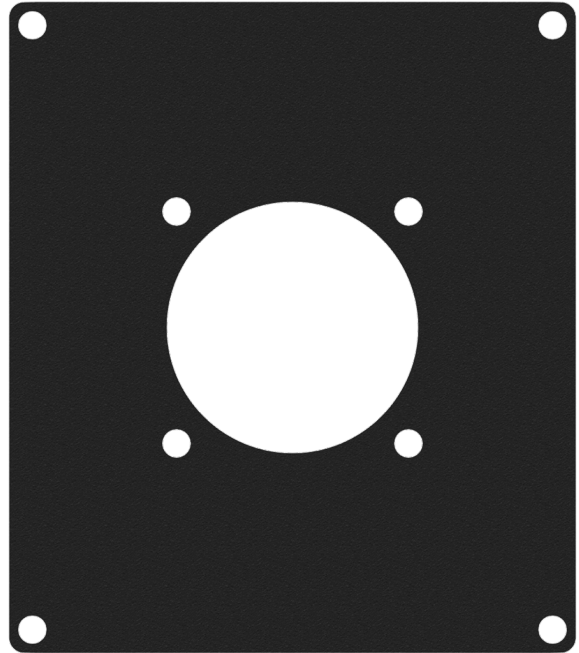


Highlights:

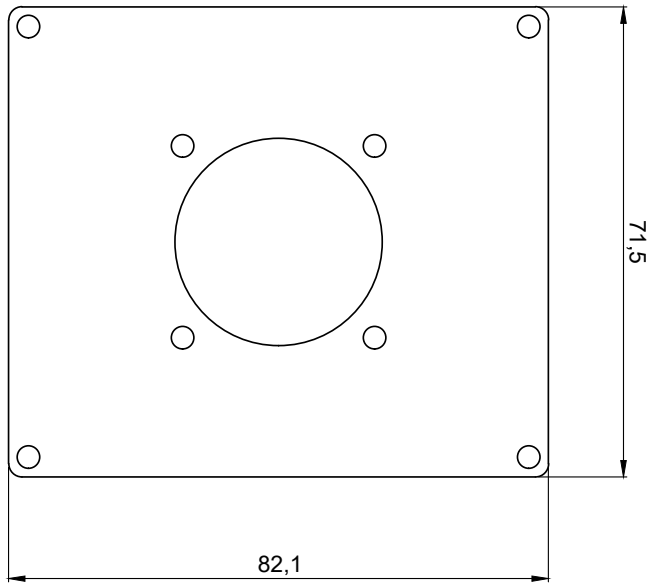
- Flexible system for system integration & connectivity
- Compatible with any CASY chassis
- 1.5 mm thick cold rolled steel frame
- Structured and scratch resistant black powder coating
- Assembly screws included


The CASY205 module features one hole to fit a G-size connector. This flexible structure for system integration & connectivity can easily be implemented in a wide variety of CASY chassis.



Product Features:

| | | |
|---------------------|------------------------|---|
| Dimensions | 71,5 x 82,1 mm (W x H) | |
| Cut-out measurement | 31 mm (Ø) | |
| Module | Space | 2 |



| | | | | | |
|---|----------------|--|-----------------------------|--|-----------------------------|
|  | CASY205 | Product description: CASY 2 SPACE COVER PLATE - 1 X G-SIZE CONNECTOR HOLE (31 MM) | Weight: TBA | Outer dimensions: (w x h x d) 71,5 x 82,1 x 1,5 | Unit height: 2 HE |
| | | | Unit height: 2 HE | | |